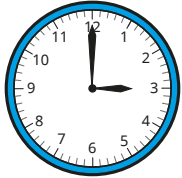
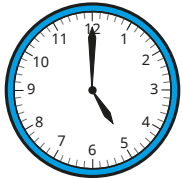


1 Match the analogue clocks to the digital times.



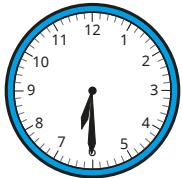
6:00



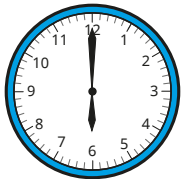
6:30



3:00



2:30



5:00

2 Write the times shown on the clocks.

The first one has been done for you.

a) 1:40

20 minutes to 2

e) 10:15

b) 1:20

f) 1:45

c) 3:16

g) 9:57

d) 8:07

How did you know whether the time was **past** or **to** the hour?

3 Write the times in digital form.

a) 10 minutes past 4

10 minutes to 4

b) 13 minutes past 9

13 minutes to 9

c) 27 minutes past 11

27 minutes to 11

What do you notice?

2 Write the times shown on the clocks.

The first one has been done for you.

a) 1:40

20 minutes to 2

e) 10:15

b) 1:20

f) 1:45

c) 3:16

g) 9:57

d) 8:07

How did you know whether the time was **past** or **to** the hour?



3 Write the times in digital form.

a) 10 minutes past 4

10 minutes to 4

b) 13 minutes past 9

13 minutes to 9

c) 27 minutes past 11

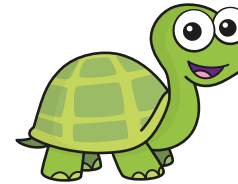
27 minutes to 11

What do you notice?



4 Tiny is writing the time.

15:4



This is how you write quarter past 4 on a digital clock.

Do you agree with Tiny?

Explain your answer.

5 Draw hands on a blank clock to show each time.

a) 3:08

c) 9:42

b) 6:18

d) 1:57



6 The time is 8 minutes to 12

Tommy and Sam write the time on a digital clock.

Tommy 12 : 08

Sam 11 : 92

a) What mistakes have Tommy and Sam made?

b) What is the correct time on a digital clock?

